



DM3730 / AM3703 SOM-LV

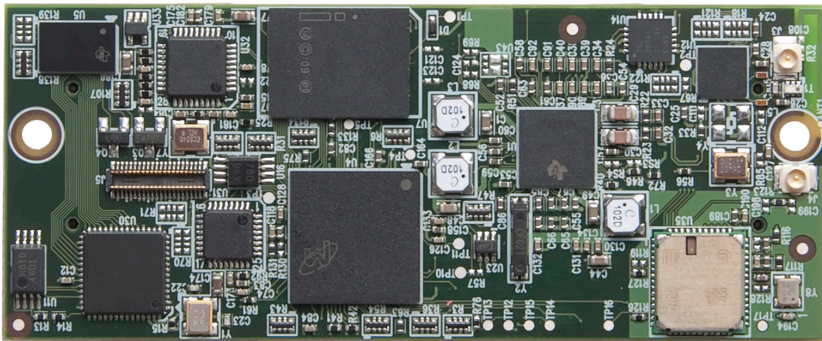
Boasts speeds of up to 800 MHz and contains an on-board Bluetooth 2.1 + EDR technology wireless radio and a 10/100 Ethernet controller with optional DSP functionality

The DM3730 SOM-LV presents a high-performance, full-featured System on Module (SOM) with all the necessary connectivity interfaces essential for today's market-changing products.

Based on Texas Instruments' DaVinciTM DM3730 digital media processor, the DM3730 SOM-LV boasts PC-like speeds OF 800MHz and contains on-board Bluetooth 2.1 + EDR technology wireless radios, and a 10/100 Ethernet controller.

By remaining footprint compatible with our existing OMAP35x SOM-LV product line, the DM3730 SOM-LV extends the roadmaps of existing products and provides an upgrade path from today's products to future technologies.

By starting with the corresponding ZoomTM DM3730 Development Kit, engineers can write application software on the same hardware that will be used in the final product.



DM3730 / AM3703 SOM-LV

**Enlarged to show detail*

The DM3730 SOM-LV is ideal for applications in the medical, point-of-sale, industrial, and security markets. From patient monitoring and medical imaging, to card payment terminals and bar code readers, to CCTV cameras and intruder alarms, the DM3730 SOM-LV allows for powerful versatility and long-life products.

DM3730 / AM3703 SOM-LV

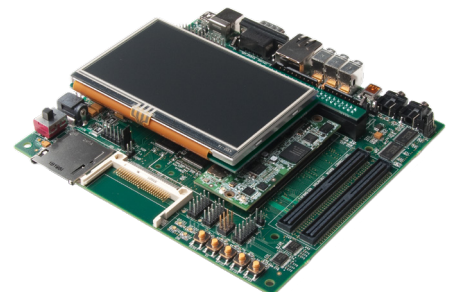
HIGHLIGHTS

- Product-ready System on Module with a TI DM3730 or AM3703 ARM[®] Cortex[™]-A8 processor running AT 800 MHz
- Bluetooth 2.1 + EDR radio
- 10/100 Ethernet controller
- Android, Linux[™], and Windows[®] Embedded CE Board Support Packages (BSPs)
- Industrial temp (-40° C to 85° C)
- Compact form factor—SOM-LV Type III (31.2 x 76.5 x 7.4 mm)
- Long product lifecycle

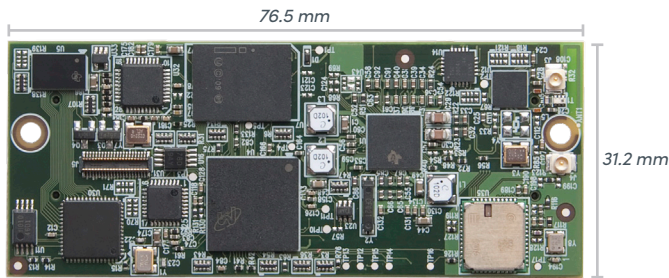
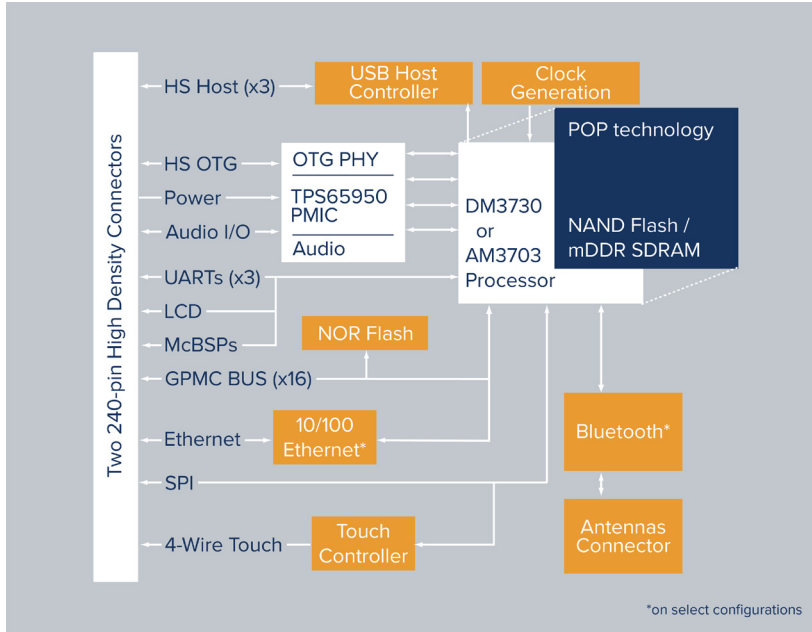
Zoom[™] DM3730 SOM-LV Development Kit

FEATURES

- Application baseboard
- DM3730 SOM-LV
- 4.3" WQVGA LCD with 4-wire touchscreen
- Wattson[™] power measurement application
- Necessary accessories to immediately get up and running
- See the Zoom DM3730 SOM-LV Development Kit Product Brief for more information



DM3730 / AM3703 SOM-LV Block Diagram



Top View ▶ Actual Size

DM3730 / AM3703 SOM-LV Ordering Information

MODEL NUMBER	SPEED (MHz)	mDDR/NAND FLASH (MB)	NOR FLASH (MB)	10/100 ETHERNET	802.11 b/g/n ETHERNET	BLUETOOTH 2.1 + EDR	TEMP. (°C)	DSP
SOMDM3730-11-1783JFIR	800	256/512	16	Y	N	Y	-40°-85°	Y

Zoom™ DM3730 SOM-LV Development Kit Ordering Information

MODEL NUMBER	SOM CONFIGURATION	SUGGESTED RESALE
SDK-DM3730-10-256512R	SOMDM3730-10-27821FCR	\$997

PRODUCT FEATURES

Processor

- TI DaVinci™ DM3730 ARM® Cortex™-A8 core running at 800 MHz
- TMS320C64x DSP core running at 660 MHz (DM3730 only)
- POWER SGX™ graphics accelerator (DM3730 only)

Memory

- Mobile DDR / NAND flash (PoP technology) 256 MB / 512 MB
- NOR flash 16 MB

Display

- Programmable color LCD controller supports up to 24 bpp TFT interface
- Hardware supports XGA 1024x768 at 24-bit color

Network Support

- 10/100 Base-T Ethernet controller
- Bluetooth 2.1 + EDR

Audio

- I2S compliant audio codec (16-bit stereo DAC, 13-bit ADC)

User Interface

- Integrated 4-wire touchscreen controller
- 8 x 8 keypad signals

PC Card Expansion

- CompactFlash Type I card (memory-mode only)
- MMC/SD card support

USB

- Three USB 2.0 high-speed host interface
- One USB 2.0 high-speed On-the-Go interface

Serial I/O

- Three external UARTs

GPIO

- Programmable I/O depending on peripheral requirements
- General purpose memory controller (GPMC) interface

Debug

- JTAG & ETM support

Software

- LogicLoader™ (bootloader/monitor)
- Android, Linux™, Windows® Embedded CE BSPs

Mechanical

- 31.2 mm wide x 76.5 mm long x 7.4 mm high

RoHS Compliant